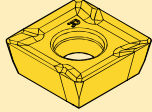


Face Mill 0°/90° – KSSM – Inch

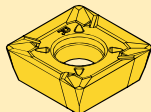


1/2" IC Inserts

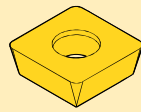
...LE



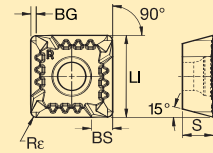
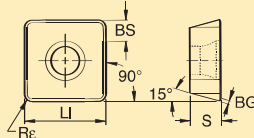
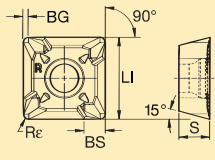
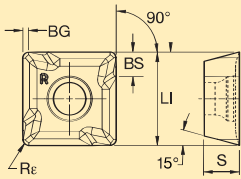
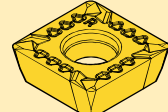
...LD2



...GN



...GB2



insert catalog number	LI	BS	S	BG	Re	steel	stainless steel	cast iron	non-ferrous metals	high-temp alloys	KC410M	KC520M	KC725M	KC915M	KC935M	KT530M	KY3500
..LE (ground) 20° rake face																	
SDCT431PDR8LE	.500	.132	.187	—	.015	■			●		■						
SDCT43PDR8LE	.500	.132	.187	—	.031	■			●		■						
SDCT433PDR8LE	.500	.132	.187	—	.046	■			●		■						
SDCT434FNLE	.500	—	.187	—	.062	■			●		■						
SDCT435FNLE	.500	—	.187	—	.078	■			●		■						
SDCT436FNLE	.500	—	.187	—	.093	■			●		■						
SDCT438FNLE	.500	—	.187	—	.125	■			●		■						
..LD (ground) 15° rake face																	
SDCT431PDER8LD2	.500	.132	.187	.003	.015	■	●			●			■				
SDCT43PDER8LD2	.500	.132	.187	.003	.031	■	●			●			■				
SDCT433PDER8LD2	.500	.132	.187	.003	.046	■	●			●			■				
SDCT434ENLD2	.500	—	.187	.003	.062	■	●			●			■				
SDCT435ENLD2	.500	—	.187	.003	.078	■	●			●			■				
SDCT436ENLD2	.500	—	.187	.003	.093	■	●			●			■				
SDCT438ENLD2	.500	—	.187	.003	.125	■	●			●			■				
..GN (ground) flat top																	
SDCW43PDSR8GN	.500	.132	.187	.009	.031	■		●									■
SDCW433PDSR8GN	.500	.132	.187	.009	.046	■		●									■
..GB (ground) 5° rake face																	
SDCT43PDER8GB2	.500	.132	.187	.004	.031	●	●	●		●		■	■	■	■		
SDCT43PDR8GB2	.500	.132	.187	.008	.031	●	●	●		●		■	■	■	■		
SDCT433PDR8GB2	.500	.132	.187	.004	.046	●	●	●		●		■	■	■	■		
..GB (precision sintered) 5° rake face																	
SDPT43PDER8GB2	.500	.132	.187	.003	.031	●	●	●		●		■	■	■	■		
SDPT43PDSR8GB2	.500	.132	.187	.011	.031	●	●	●		●		■	■	■	■		■

● ... first choice
 ● ... alternate choice

insert catalog number	material group	surface speed (ft./min.)							IPT
		KC410M	KC520M	KC725M	KC915M	KC935M	KT530M	KY3500	
SDPT..E.GB2	steel			300 - 650					.003 - .010
SDCT..E.GB2				300 - 650		500 - 1100			.004 - .010
SDCT..S.GB2				300 - 650		500 - 1100			.007 - .015
SDP..S.GB2				300 - 650		500 - 1100	600 - 1000		.007 - .015
SDCT..LD2	stainless steel			200 - 500					.003 - .010
SDPT..GB2				200 - 500					.003 - .012
SDCT..GB2				200 - 500		500 - 900			.004 - .012
SDPT..E.GB2	cast iron				500 - 1200	350 - 600			
SDCW..GN								1500 - 3500	.004 - .007
SDCT..E.GB2			400 - 750		500 - 1200	350 - 600			.004 - .010
SDCT..S.GB2			400 - 750		500 - 1200	350 - 600			.004 - .015
SDCT..LE	non-ferrous metals	900 - 3000							.003 - .010
SDCT..E.LD2	high-temp alloys			80 - 120					.003 - .007
SDCT..E.GB2				80 - 120					.004 - .007